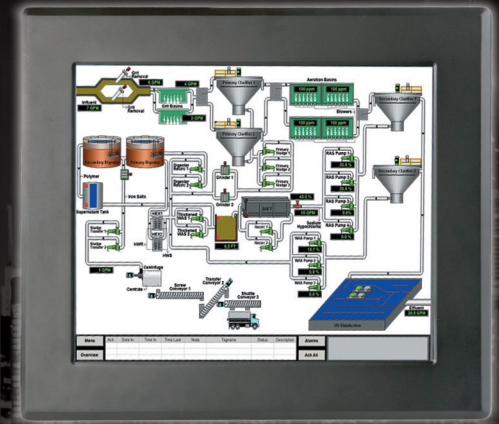


# VPAC 15

## SCALABLE ALL-IN-ONE CONTROLLER



### OVERVIEW

VPAC family of controllers are available as part of PRIMEX® pump controller solutions from basic pump control and standard telemetry systems, to complex custom controls, large system integration, and icontrol® cloud-based SCADA services.

- Leased Lines
- Fiber Optic
- Radio (UHF, VHF, Spread Spectrum)
- Cellular
- Satellite
- icontrol® cloud-based SCADA

VPAC controllers are the ideal solution for all types of telemetry systems and can be used as either a CTU (Master) or RTU (Remote) within the system.

### FEATURES

- Fast Scan Rates with 4x the Memory
- Online Programming
- Dual Ethernet; Dual CAN
- USB Ports, removable flash drives for data logging, field application updates, recipe management and more
- Open-architecture PLC-based control
- Intuitive Graphical User Interfaces
- RS232 and RS485 serial ports maintain connectivity with existing serial devices equipment
- Flexible input and output expansion modules
- Built-in comprehensive diagnostics allowing troubleshooting without PC based diagnostic tools
- All metal construction

**Navigation-Virtual Navigation** keys provide easy, intuitive navigation and quick access to important control and status information.

**High Resolution Graphics**-The 15" VPAC has a fast, powerful logic engine, XVGA (1024x768) touchscreen and optional snap-on and remote I/O. The VPAC is compact, robust and reliable. The controller combines programming in ladder logic, operator interface, I/O and networking into an integrated, all-in-one unit.

**First-Class Communications**-Supports HTTP web pages, FTP file transfer, Modbus/TCP Master and Modbus TCP slave, and many other standard protocols. A second Ethernet port is currently dedicated to SmartRail Ethernet I/O, a highly expandable, modular I/O system. This keeps the I/O traffic completely segregated from any SCADA, ERP or internet related traffic.

**Robust Construction**-Constructed with an all metal chassis is typically mounted in a control panel and supports IP66 environments. For further flexibility, the VPAC features VESA mount hole pattern. This allows them to support alternative mounting methods such as wall-mounting or an articulating arm. These alternative methods may be a good choice for a VPAC control room application using remote I/O.



844-4PRIMEX (477-4639)  
WWW.PRIMEXCONTROLS.COM

Ashland, OH	800-363-5842
Clearwater, FL	800-349-1905
Detroit Lakes, MN	888-342-5753
Milford, OH	513-831-9959
Plymouth, MN	763-559-0568

# VPAC 15

SCALABLE ALL-IN-ONE CONTROLLER



Part Number	1050557
<b>Display</b>	
Display Type	15" X VGA LCD with Backlight; TFT; 350 units
Display Screen Dimensions	1024x786
Display Ratio	4:3
Display Memory	130 MB
Colors	65536
Display Life	50,000 hours at 25°C
<b>Keypad/Touchscreen</b>	
User Keys	7 Virtual Navigation Keys
Numeric Keys	Pop-up Keypad
<b>Controller</b>	
CPU Type	Intel® Atom N270 1.6GHz Processor
Ladder Logic Memory	1 MB
Screens Supported	1023
Local Comment Storage	Yes
Floating Point Support	Yes
Auto Tune PID Capable	Yes
<b>I/O Support</b>	
Built-In I/O	No
Expandable I/O	Yes, via Ethernet, CAN, or Serial
Digital I/O	2048/2048
Analog I/O	512/512
General Purpose Relays	9999
General Purpose Internal Bits	4096
<b>Connectivity</b>	
Serial	3 Ports, 2-RS232 and 1-RS485
Ethernet	2 10/100/1000 (1 dedicated for I/O), Remote I/O, Peer-to-Peer, PC, Programming
USB-A	4-High Speed 2.0, Supports 2 USB Based Drives
CAN	2-Ports (1 dedicated I/O), Remote I/O, Peer-to-Peer, Programming
PLC/Drive Protocols	Allen Bradley DF1, CAN, GE Fanuc SNP and Modbus
RTU/Modbus Master/Slave	Yes, Modbus Master and/or Slave
Healy-Ruff PRO-Line	Yes, PRO-Line and PRO-Line Gateway
Serial ASCII In/Out	Yes
Video	VGA Video Out for Mirrored Display
Audio	Mic, Line In, Line Out
<b>Networking</b>	
Integrated CAN Network	Standard
Maximum CAN Distance	6000 ft
Peer-to-Peer Messaging	Yes
DeviceNet/PROFIBUS Master	Optional
<b>Ethernet/Internet/Wireless</b>	
Ethernet Support	Modbus TCP/IP, Ethernet IP
Wireless Modem Support	Optional
Cellular Modem Support	Optional
<b>General Specifications</b>	
Primary Power Range	10-30 VDC
Dimensions	15.75"x12.60"x3.15"
Environmental	0 to 45°C
Humidity	30 to 90%
Product Certifications	IP66, Superior to NEMA 12 but less than NEMA 4
Cloud-based SCADA Services <b>icontrol®</b>	Optional